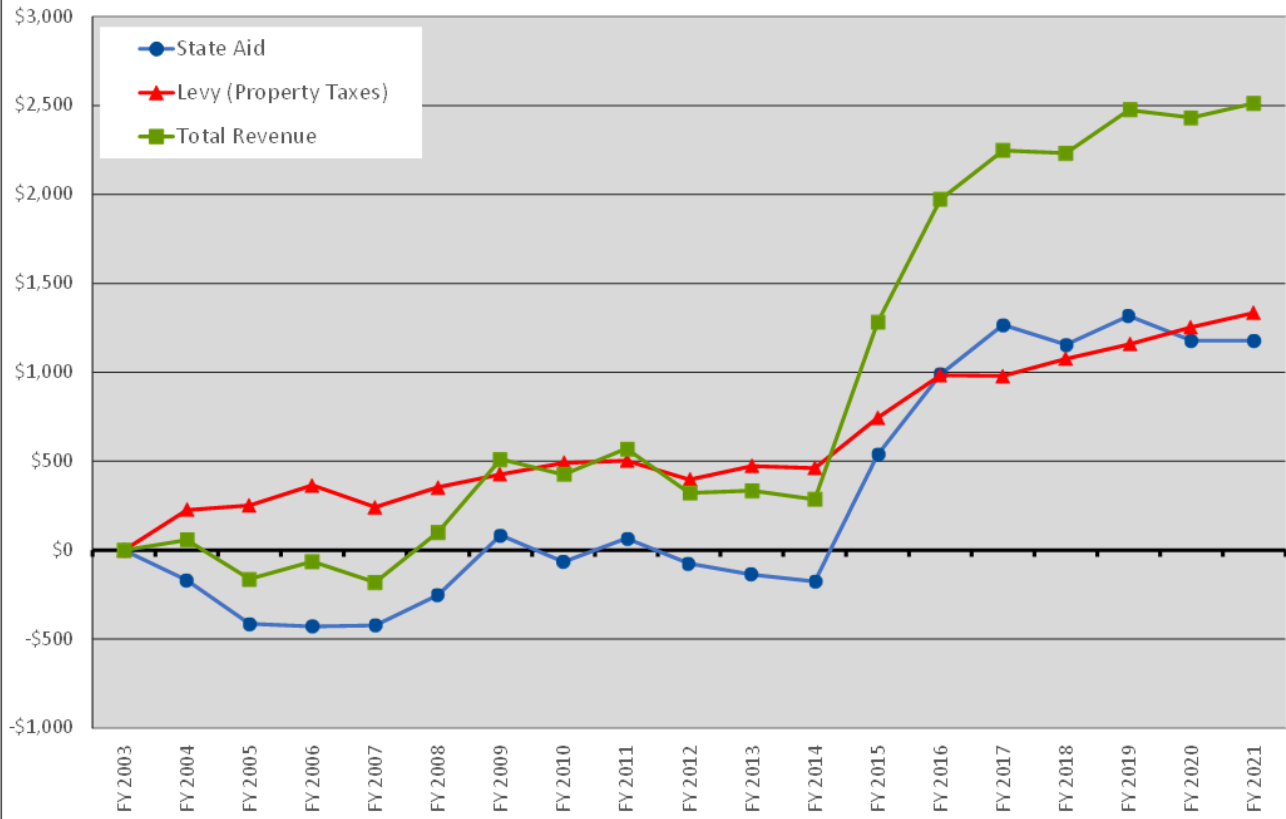


North Branch School District - Change in Revenue per Student (ADM)

Adjusted for Inflation (All Amounts in Constant FY2021 Dollars) - Consumer Price Index (CPI)

State Aid and Levy Equals Total Revenue

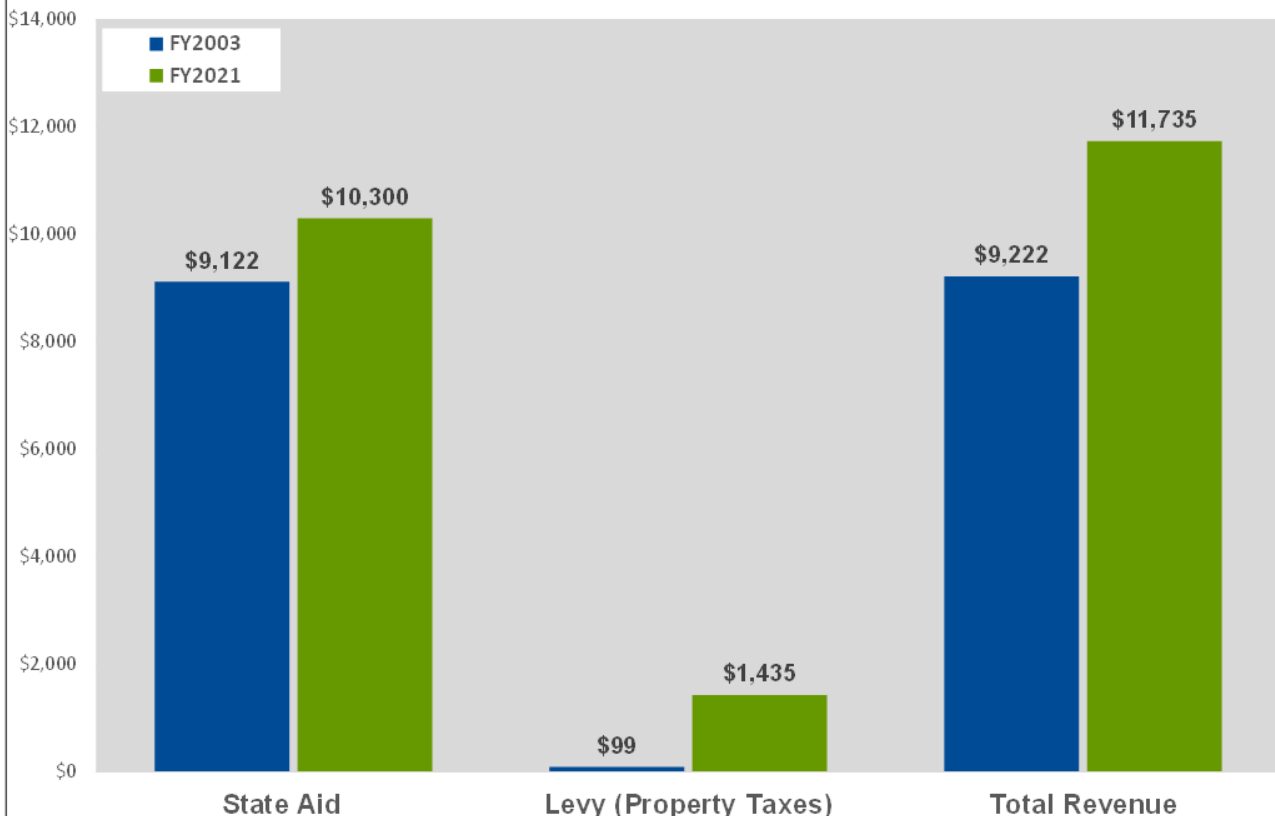


schoolsforequity.org

North Branch School District Revenue per Student (ADM)

State Aid and Levy Equals Total Revenue

All Amounts in Constant FY2021 Dollars - Consumer Price Index (CPI)

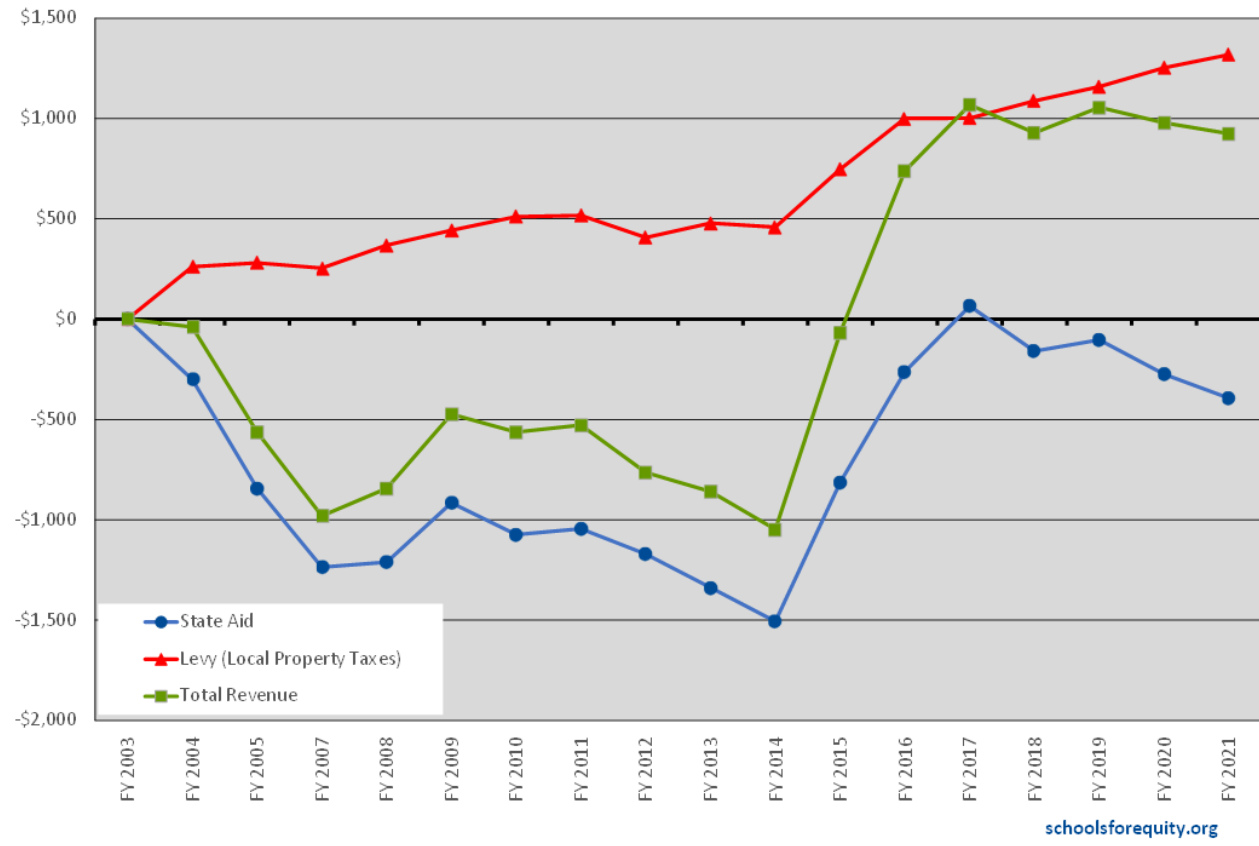


schoolsforequity.org

North Branch School District - Change in Revenue per Student (ADM)

Adjusted for Inflation (All Amounts in Constant FY2021 Dollars) - Implicit Price Deflator (IPD)

State Aid and Levy Equals Total Revenue



North Branch School District Revenue per Student (ADM)

State Aid and Levy Equals Total Revenue

All Amounts in Constant FY2021 Dollars - Implicit Price Deflator (IPD)

